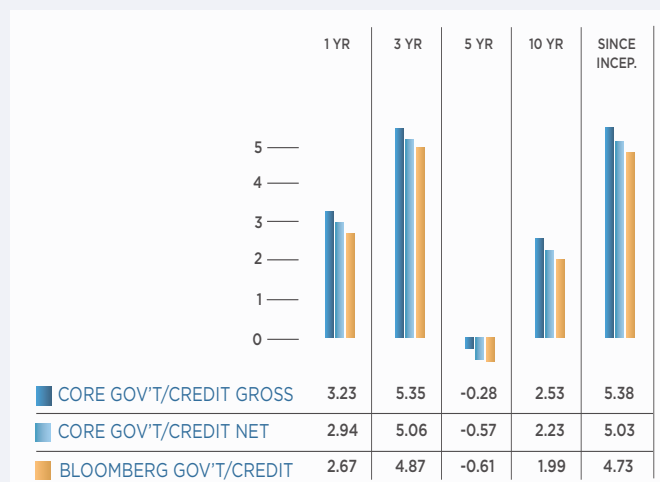


COMPANY INFORMATION

Founded in 1984
Independently-Owned Partnership
Assets Under Management: \$8.1 Billion

STRATEGY FACTS

Inception Date	January 1, 1992
Primary Benchmark	Bloomberg Govt/Credit
Total Product Assets	\$74 Million
Fixed Income Assets	\$2.0 Billion
Investment Vehicles	Separate Account
Minimum Investment	\$5 Million

ANNUALIZED RETURNS (%) AS OF MOST RECENT QUARTER

CALENDAR YEAR RETURNS (%)

PERIOD	GROSS	NET	BB G/C
2025 YTD	6.58	6.36	5.93
2024	1.58	1.29	1.18
2023	6.13	5.85	5.72
2022	-13.35	-13.59	-13.58
2021	-1.76	-2.11	-1.75
2020	10.59	10.33	8.93
2019	10.06	9.77	9.71
2018	0.24	-0.11	-0.42
2017	4.56	4.19	4.00
2016	3.47	3.11	3.05
2015	0.91	0.56	0.16

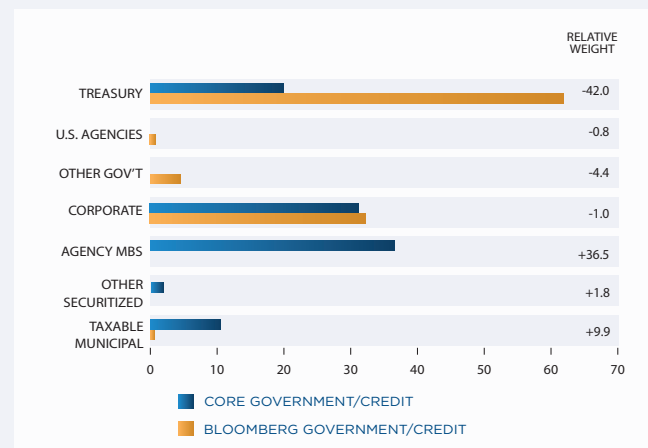
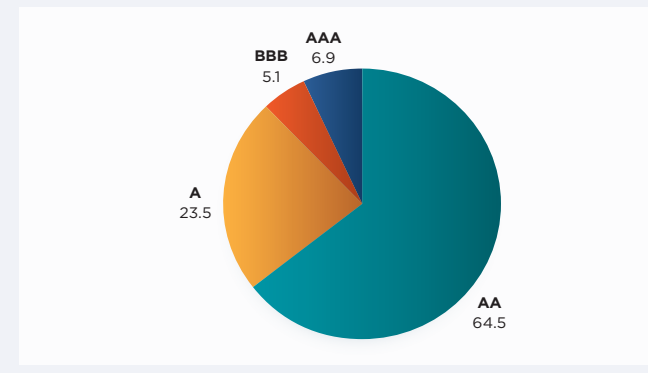
STRATEGY & PROCESS DESCRIPTION

Our Core strategies are broadly diversified portfolios which focus on dollar-denominated, high quality, investment grade fixed income securities across the entire maturity spectrum. Our approach emphasizes non-Treasury sectors that meet our stringent risk/reward parameters. The Core Government/Credit portfolio is designed for clients that are less comfortable with the large exposure to mortgage-back securities found in most broad market benchmarks.

Our fixed income process is designed to consistently maintain an effective yield advantage versus each client's benchmark while cautiously managing the assumption of risk. Our goal is to compound that yield advantage over time. We achieve this objective by investing in undervalued fixed income securities and sectors, managing portfolio duration relative to a client's benchmark, and strategically investing in different maturities, given the shape of the yield curve. We are balanced in our approach, using both qualitative judgment and quantitative tools. In every case, we strive to achieve the optimum balance between risk and reward.

PORTFOLIO CHARACTERISTICS

	CORE G/C	BB G/C
Yield to Maturity	4.5%	4.2%
Effective Duration	6.2 years	6.1 years
Effective Maturity	7.8 years	8.6 years
Current Yield	3.7%	3.9%
Quality	AA	AA-

SECTOR WEIGHTINGS (%)

QUALITY DISTRIBUTION (%)


Total Product Assets and Fixed Income Assets include the fixed income portion of balanced accounts. Sector Weightings, Portfolio Characteristics, and Quality Distribution are based on a separately managed representative account invested in WEDGE Capital Management's Core Government/Credit strategy. Returns are based on the Core Government/Credit composite. All information is presented as of 09/30/2025. Portfolio Characteristics are provided by Bloomberg.

This material is presented for informational or educational purposes only. It should not be considered investment advice nor should it be interpreted as a recommendation about the management of your portfolio.

GIPS® Composite Report - Core Government Credit Composite

	WEDGE		Bloomberg U.S. Government/ Credit	3-Yr Standard Deviation		Composite			Firm Assets (\$MM)
				Bloomberg U.S. Government/ Credit		Accounts	Standard Deviation	Assets (\$MM)	
				Gross	Net				
2024	1.58%	1.29%	1.18%	7.59%	7.55%	4	n/a*	\$78	\$7,650
2023	6.13	5.85	5.72	7.12	7.11	5	n/a*	90	7,580
2022	-13.35	-13.59	-13.58	6.28	6.10	5	n/a*	87	8,113
2021	-1.76	-2.11	-1.75	4.41	4.19	6	0.1	79	10,186
2020	10.59	10.33	8.93	4.24	4.04	9	1.0	88	10,775
2019	10.06	9.77	9.71	3.39	3.26	11	0.0	195	11,330
2018	0.24	-0.11	-0.42	3.15	3.16	11	0.1	153	10,462
2017	4.56	4.19	4.00	3.29	3.28	12	0.1	104	13,573
2016	3.47	3.11	3.05	3.49	3.46	15	0.2	132	12,521
2015	0.91	0.56	0.16	3.21	3.24	14	0.1	136	11,297

*Dispersion is not presented when five or fewer portfolios are included in the composite for the full year.

WEDGE Capital Management L.L.P. claims compliance with the Global Investment Performance Standards (GIPS®) and has prepared and presented this report in compliance with the GIPS Standards. WEDGE Capital Management L.L.P. has been independently verified for the period January 1, 2013 through December 31, 2024. The verification report is available upon request. A firm that claims compliance with the GIPS standards must establish policies and procedures for complying with all the applicable requirements of the GIPS standards. Verification provides assurance on whether the firm's policies and procedures related to composite maintenance, as well as the calculation, presentation, and distribution of performance, have been designed in compliance with the GIPS standards and have been implemented on a firm-wide basis. Verification does not provide assurance on the accuracy of any specific performance report. GIPS is a registered trademark of CFA Institute. CFA Institute does not endorse or promote this organization, nor does it warrant the accuracy or quality of the content contained herein. WEDGE Capital Management L.L.P. is an SEC registered independent investment adviser owned by eleven general partners. The firm was founded in 1984 and provides a range of equity, fixed income, and balanced investment strategies to institutional and other investors. The firm's policies for valuing investments, calculating performance, and preparing GIPS Composite Reports, as well as a list of all composite descriptions, are available by contacting the Performance Group, WEDGE Capital Management, 301 S. College Street, Suite 3800, Charlotte, NC 28202 or performance@wedgcapital.com.

Performance data is historical and is no indication of future results. Investing in marketable securities such as stocks and bonds involves the risk of loss. Generally, the greater the return potential, the greater the risk of loss. Please see WEDGE's ADV Part 2A for specific sources of risk that can adversely affect an investment. Valuations and returns are in U.S. dollars. Beginning in 2023 total firm assets are rounded to the nearest ten million. Internal dispersion is calculated using equal-weighted gross of fee standard deviation of all portfolios that were included in the composite for the entire year. The three-year annualized standard deviation measures the variability of the composite gross returns and the benchmark returns over the preceding 36-month period. Investment returns reflect the reinvestment of income. Gross performance results are presented before management fees but after all trading expenses.

Core Government/Credit: The Core Government/Credit Fixed Income composite was created on 01/01/1993, with an inception date of 01/01/1992. The composite consists of all discretionary fixed income accounts and the fixed income portion of discretionary balanced accounts, including cash equivalents, with a minimum of \$1MM invested in the Core Government/Credit Fixed Income strategy which invests in U.S. dollar denominated, investment grade core fixed income securities. Prior to 2012, any discretionary taxable accounts were included in a separate composite. Beginning in April 2020 an account will not be added back to the composite until it is greater than the minimum asset level on both the first and last day of the month. At that point, it will be added to the composite as of the month in which it exceeded the minimum level. Beginning July 1, 2018, an account must be below the minimum size threshold at the end of the month before it is removed from the strategy composite. Prior to July 1, 2018 the exclusion period was three months instead of one month. Net returns are calculated by subtracting the actual management fees paid on a monthly basis beginning January 1, 2019. Prior to January 1, 2019, net returns are calculated by subtracting the highest applicable management fee (0.35% on an annual basis, or 0.03% monthly) on a monthly basis from the gross composite monthly return. The management fee schedule is as follows: 0.35% of the first \$10MM under management, 0.30% on the next \$15MM, 0.25% on the next \$25MM, 0.20% on the next \$50MM, and 0.15% on all assets over \$100MM. See Part 2A of Form ADV for details of advisory fees. The appropriate index is the Bloomberg U.S. Government/Credit Index which measures the performance of non-securitized, investment grade, publicly issued, U.S. dollar denominated, fixed rate taxable bonds. The index includes the reinvestment of income. Investors cannot invest directly in an index.